



# Conference and Events

---

voco

AN IHG HOTEL



Expect a hotel full of character, where everything is delivered with an informal, unstuffy attitude.

---







# A warm welcome to voco™ Leicester

## ALWAYS DEPENDABLE

Expect a very warm welcome to our highly acclaimed hotel in the heart of Leicester.

Whether it's a work trip, weekend get-together or a family celebration, at voco® Leicester you'll have everything you need and more.

Welcoming guests since 2022, our stylish hotel has four contemporary event spaces to choose from - each with exceptional views.

From intimate family affairs to larger celebrations of up to 120 guests, whatever you have planned, let us bring your event to life.

We're on hand to host, making your event as smooth and enjoyable as possible.

Transform your next business event or get together, and benefit from our Day Delegate Rate or 24-Hour Conference Rate. With an array of flexible AV compatible meeting options, our team will work with you to create a bespoke package allowing you to focus on the bigger picture and leave the finer details to us.

Eat, drink and celebrate with friends or get some work done. Explore the city and all it has to offer on our doorstep.

Take a wander. Take your time, it's all yours.

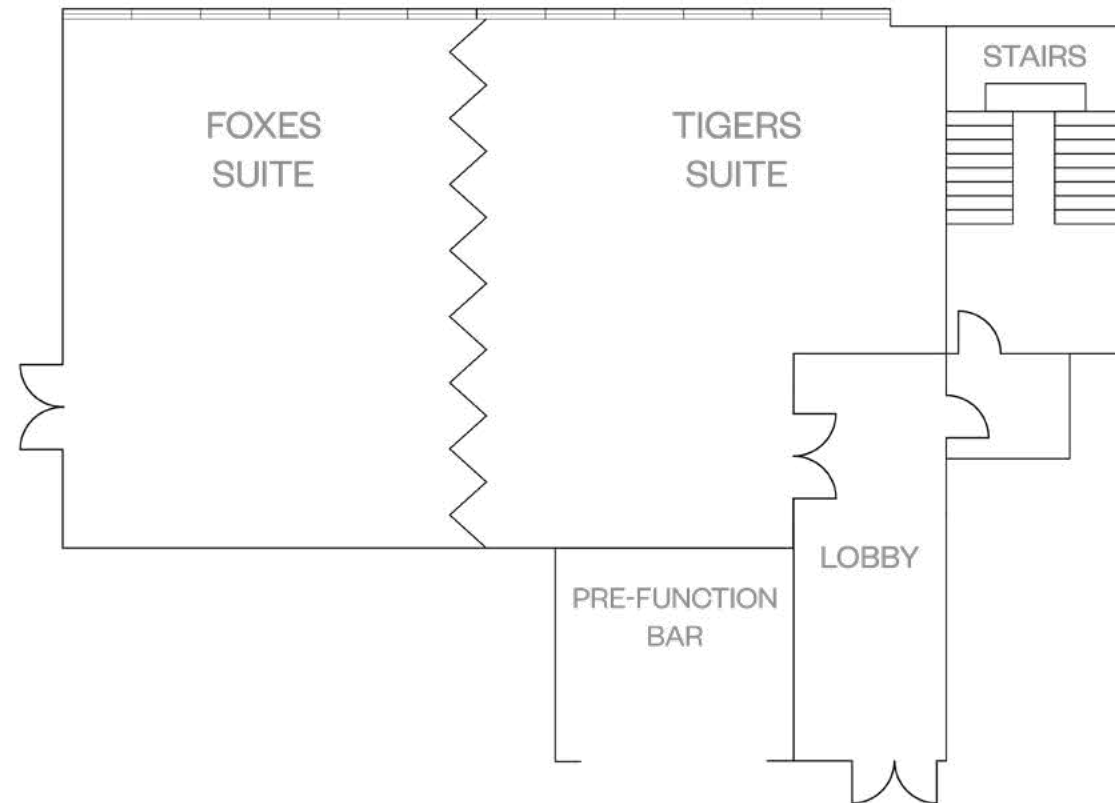


# Foxes & Tigers Suite

## FIRST FLOOR

The Foxes & Tigers Suite is our largest conference and event room featuring glass floor-to-ceiling windows overlooking parkland with natural daylight that floods the room.

This room can also be partitioned into two separate rooms, giving you flexibility for activities throughout the day. Just outside the room you will find a pre-function area, ideal for drinks receptions and refreshment breaks.



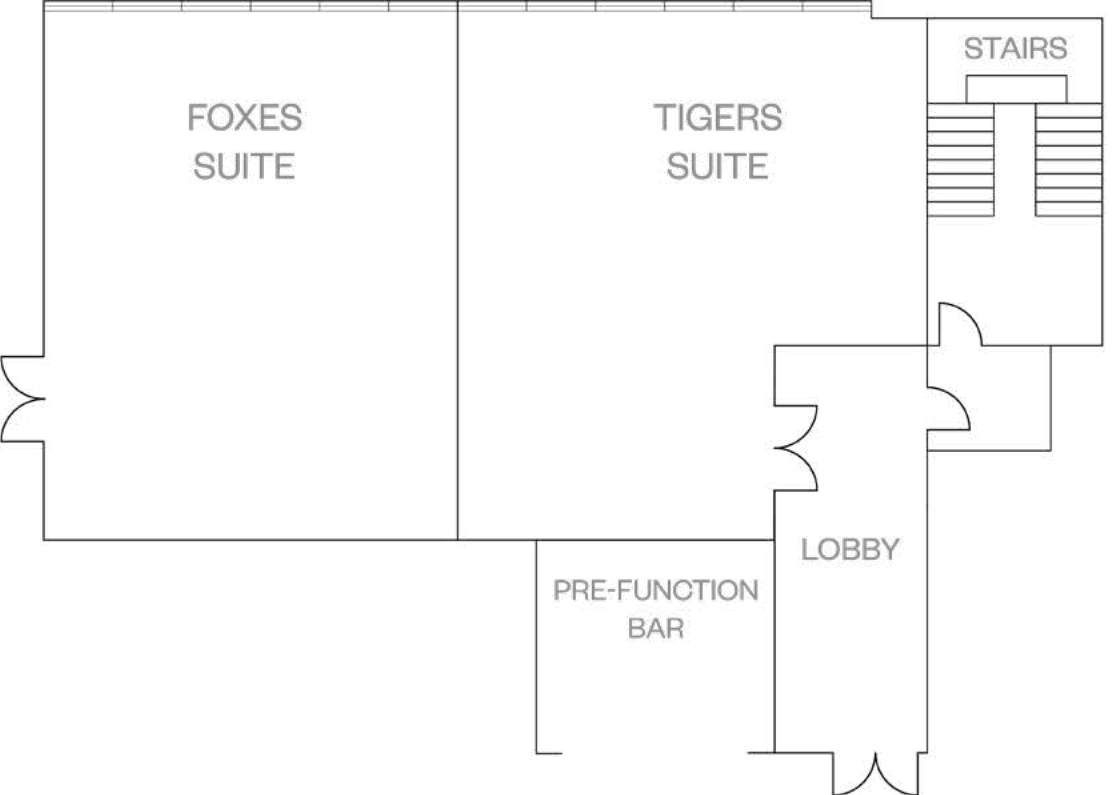




# Foxes and Tigers

## FIRST FLOOR

Enter our Foxes and Tigers Suites and impress your guests with wonderful panoramic views. These adjoining suites are ideal for executive board meetings or intimate parties and celebrations for up to 40 guests. Located on the first floor, these rooms will add plenty of natural daylight to your meeting or event.

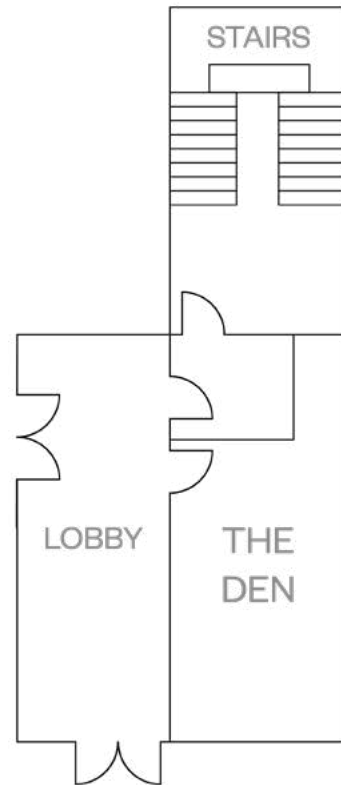




# The Den

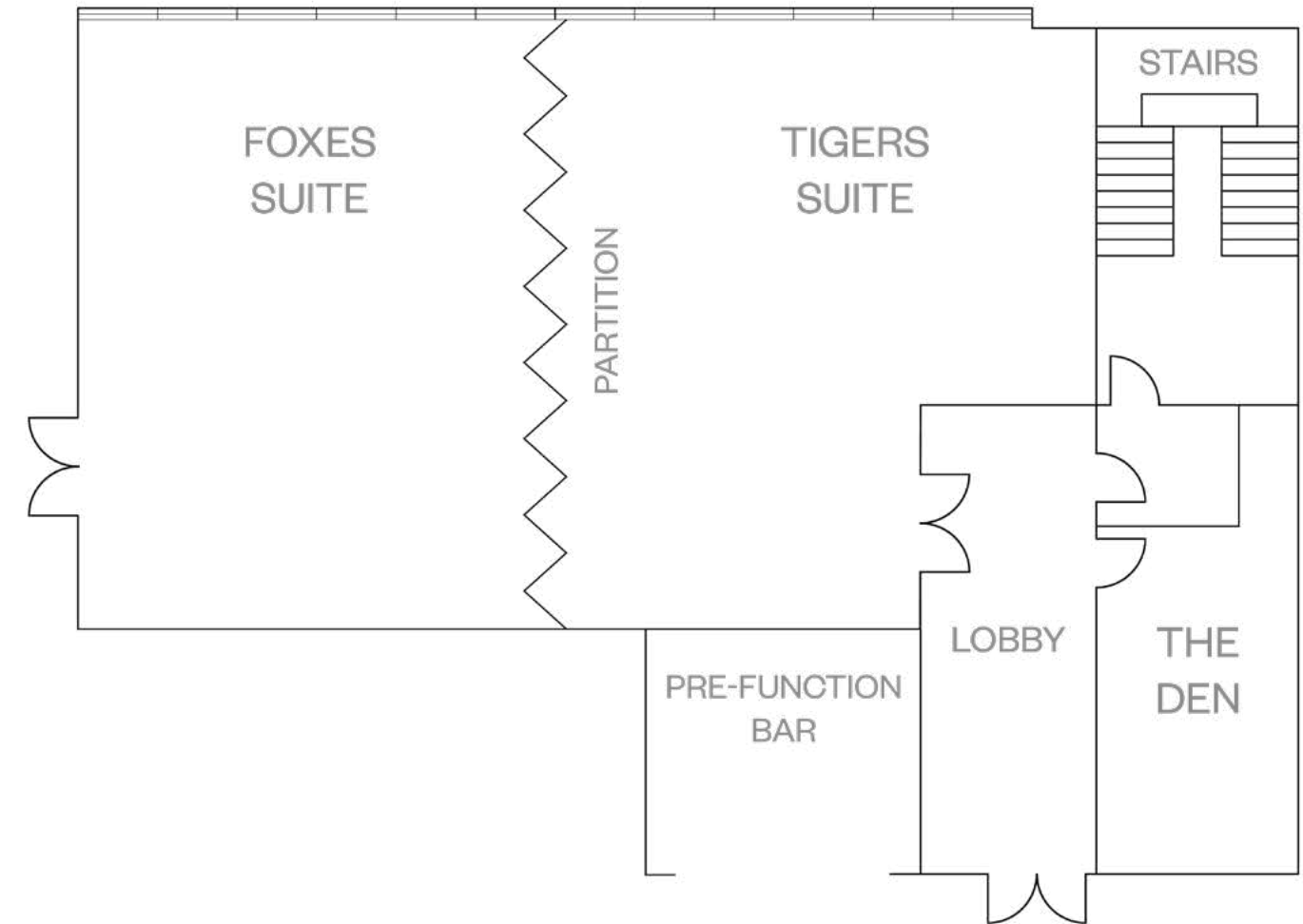
## FIRST FLOOR

When you're looking for a reason to get out of the office, The Den offers the perfect space, you can expect a private atmosphere perfect for small meetings or breakout space for up to 12 people.



# Capacities and dimensions

Room Name	Dimensions L x W (m)	Floor Space (m <sup>2</sup> )	Theatre	Classroom	Boardroom	Cabaret	Dining
<b>Foxes &amp; Tigers</b>	11.4m x 14.9m	169.86m <sup>2</sup>	150			100	120
<b>Foxes</b>	11.4m x 8.9m	101.46m <sup>2</sup>	60	20	20	40	60
<b>Tigers</b>	11.4m x 7m	79.80m <sup>2</sup>	60	20	30	45	60
<b>The Den</b>	7.2m x 3.2m	23.04m <sup>2</sup>	-	-	12	-	12





# Delegate Packages

---

**WE HAVE A FANTASTIC DAY DELEGATE OFFERING FROM £39.00 PER DELEGATE WHICH INCLUDES:**

Main meeting room hire:

Large in room TV screens with connection cables

Complimentary Wi-Fi

Arrival tea, coffee, breakfast snack

Mid-morning tea, coffee and snacks

Range of lunch offerings to suit your event size

Afternoon tea, coffee and snacks

Conference stationery

AV equipment

Sweets

Flipchart and pens

Dedicated on hand staff

Delegate packages

**WE ALSO OFFER 24-HOUR RATES FROM £150.00 WHICH INCLUDE ACCOMMODATION, BREAKFAST AND DINNER ALONG WITH YOUR DAY DELEGATE PACKAGE.**







## Events and Private Dining

### BANQUETING

Business lunch, buffet or grand banquet; impress your guests with a meal to remember. Whether you're celebrating a corporate success or simply keeping your delegates sustained and energised, banqueting at voco® Leicester is every bit as impressive as our surroundings. Our chefs have created a selection of menus inspired by locally-sourced seasonal produce – or we can work with you to tailor-make a menu for your special occasion.



# Accessibilty

---

Access around our public areas is made by means of level access. Our furniture and soft furnishings were carefully chosen with all types of disability and impairments in mind.

Braille buttons in the lift

Wheelchair height tables

Induction loops available

Accessible toilet on the same floor as meeting rooms with grab rails and emergency buttons







# Rooms and Suites

---

## A PLACE TO SLEEP

Here's what you get in any of our 191 elegant and unstuffy rooms, 10 of which are fully accessible; Premium linens and lush toiletries. Free Wi-Fi and a desk where you can work in comfort. A TV for when you're off duty. An aerated shower, oh, and a kettle for a morning cuppa.

## STANDARD

Charming and cosy our standard rooms are thoughtfully furnished to create a relaxing environment.

## DELUXE

Unwind in a spacious and modern deluxe room. Enjoy the ultimate balance of comfort and convenience for business and leisure travellers alike.

## SUITES AND JUNIOR SUITES

Add a spot of luxury to your stay with our suites. Take in stunning city views from your own hot tub and private terrace or find complete relaxation in a plush king sized bed.



# IHG<sup>®</sup> BUSINESS REWARDS

---

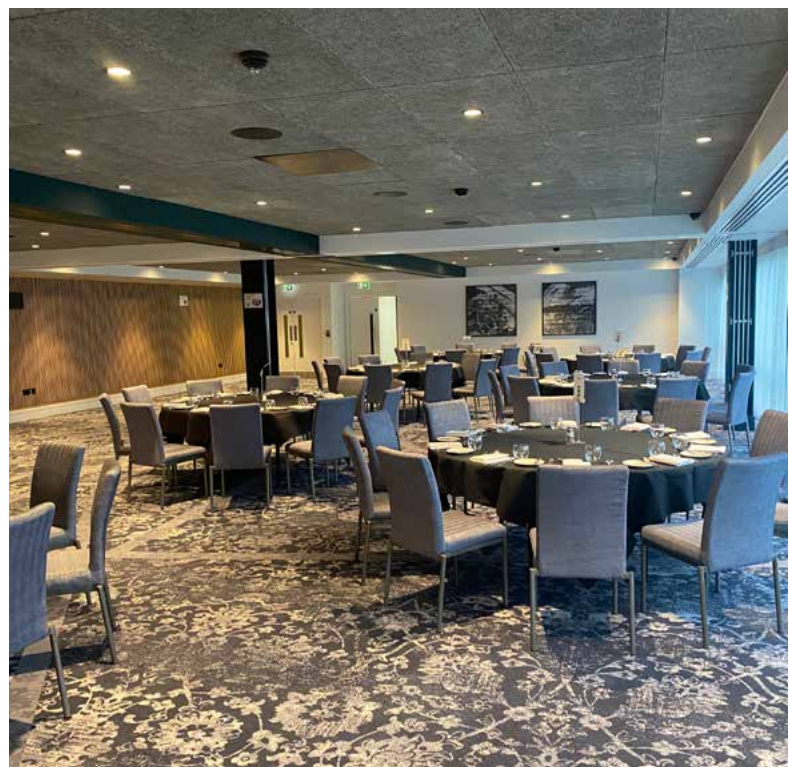
## EARN WITH IHG BUSINESS REWARDS

When you make bookings on behalf of others, for business or for pleasure, we're here to reward you. With IHG<sup>®</sup> Business Rewards, you can earn points every time you book accommodations, meetings, or events at nearly 6,000 participating IHG<sup>®</sup> Hotels & Resorts worldwide.

Join now at [ihg.com/businessrewards](https://ihg.com/businessrewards)









# VOCO®

AN IHG HOTEL

---

Leicester

## Finding us

---

### TRAVEL BY RAIL

Nearest mainline train station, London Road Railway Station is only a 15 minute walk to the hotel.

### TRAVEL BY ROAD

5 miles to / from M1 | Birmingham, 42 miles  
Leeds, 102 miles | London, 101 miles  
Limited parking available on-site

### TRAVEL BY AIR

East Midlands Airport (EMA), 20 miles

101 Welford Road, Leicester, LE2 7QS  
+44 (0) 116 366 5693 | [vcleicester.co.uk](http://vcleicester.co.uk)